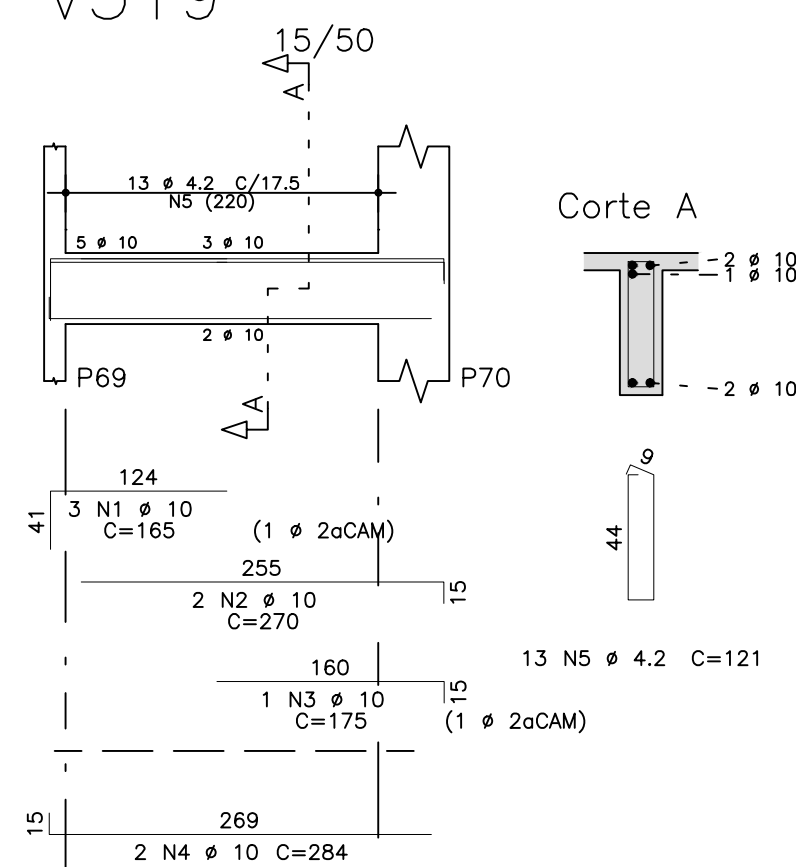
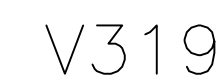
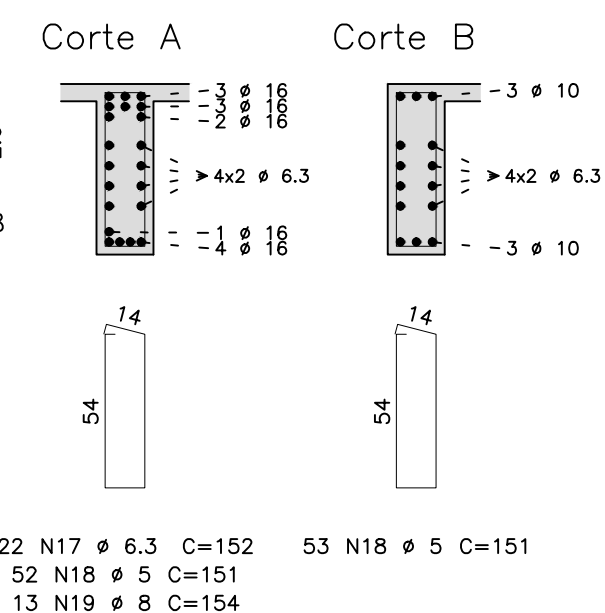
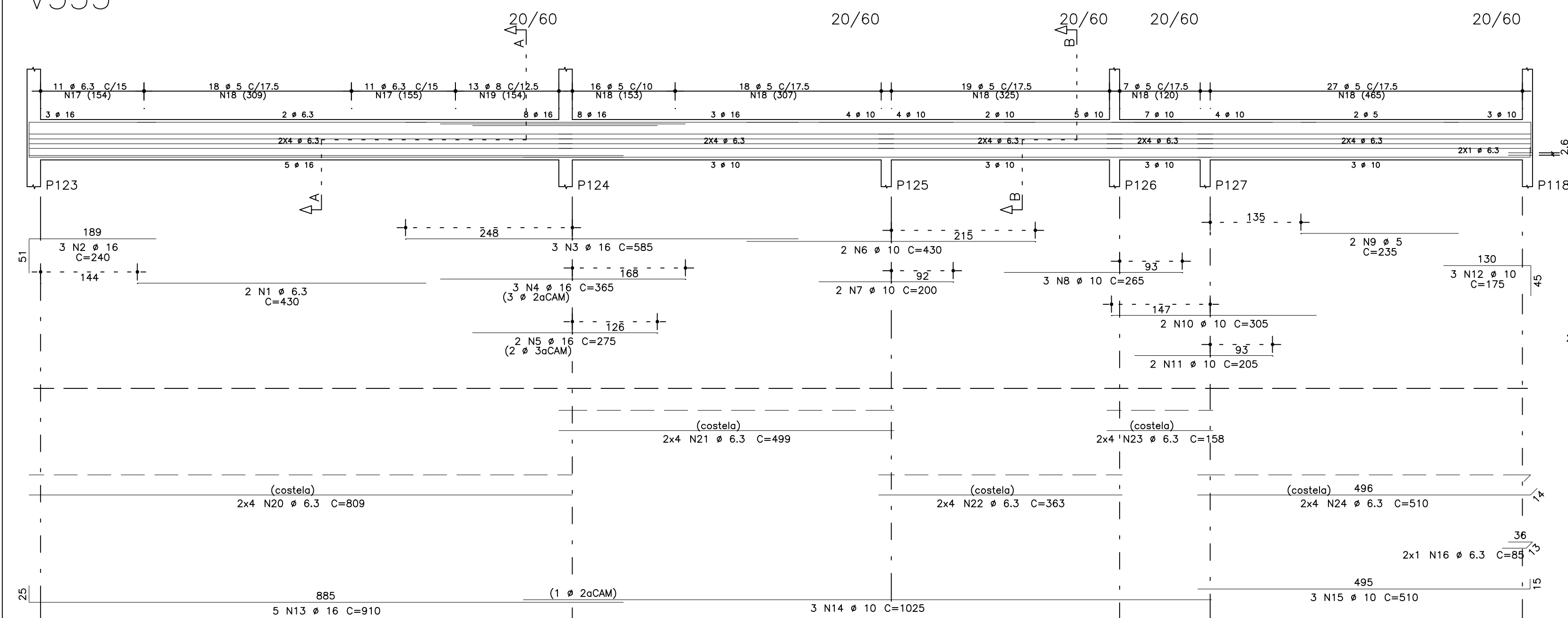


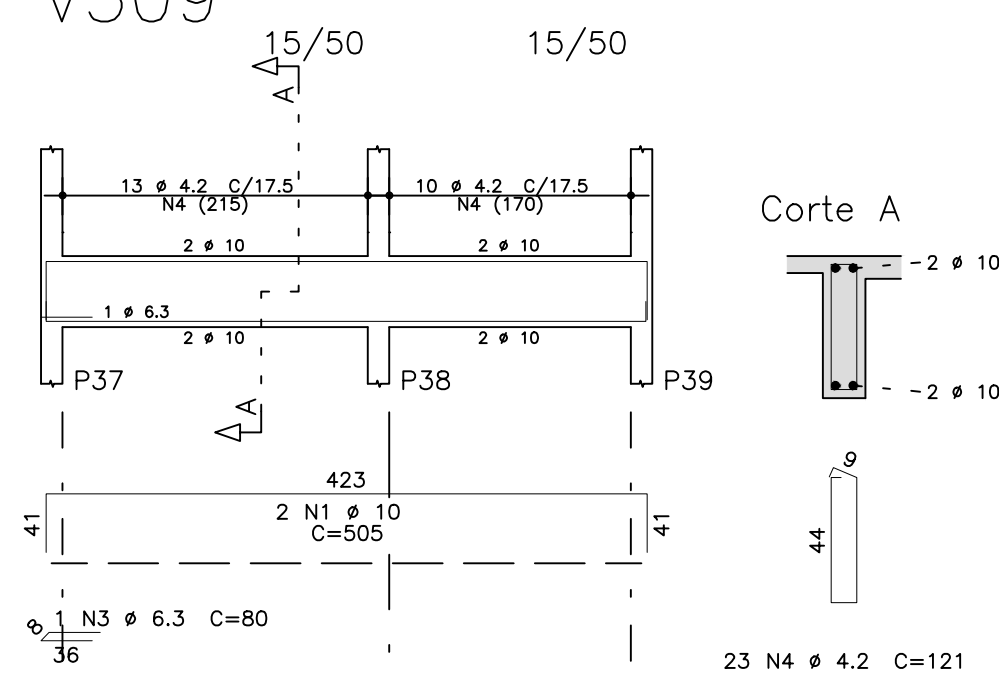
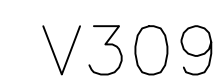
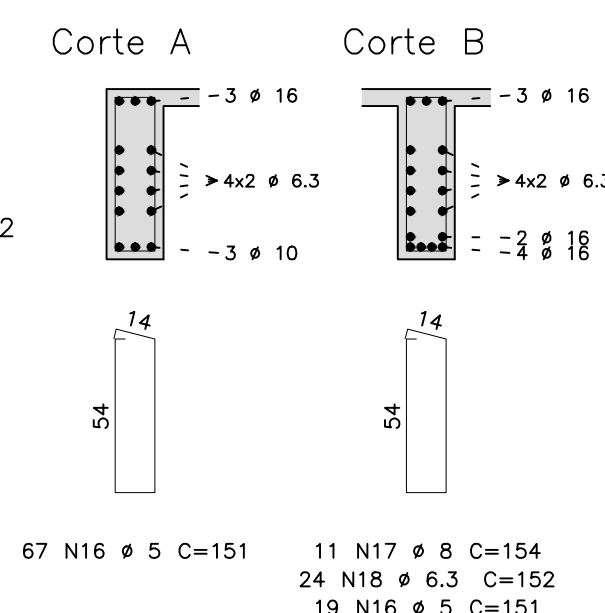
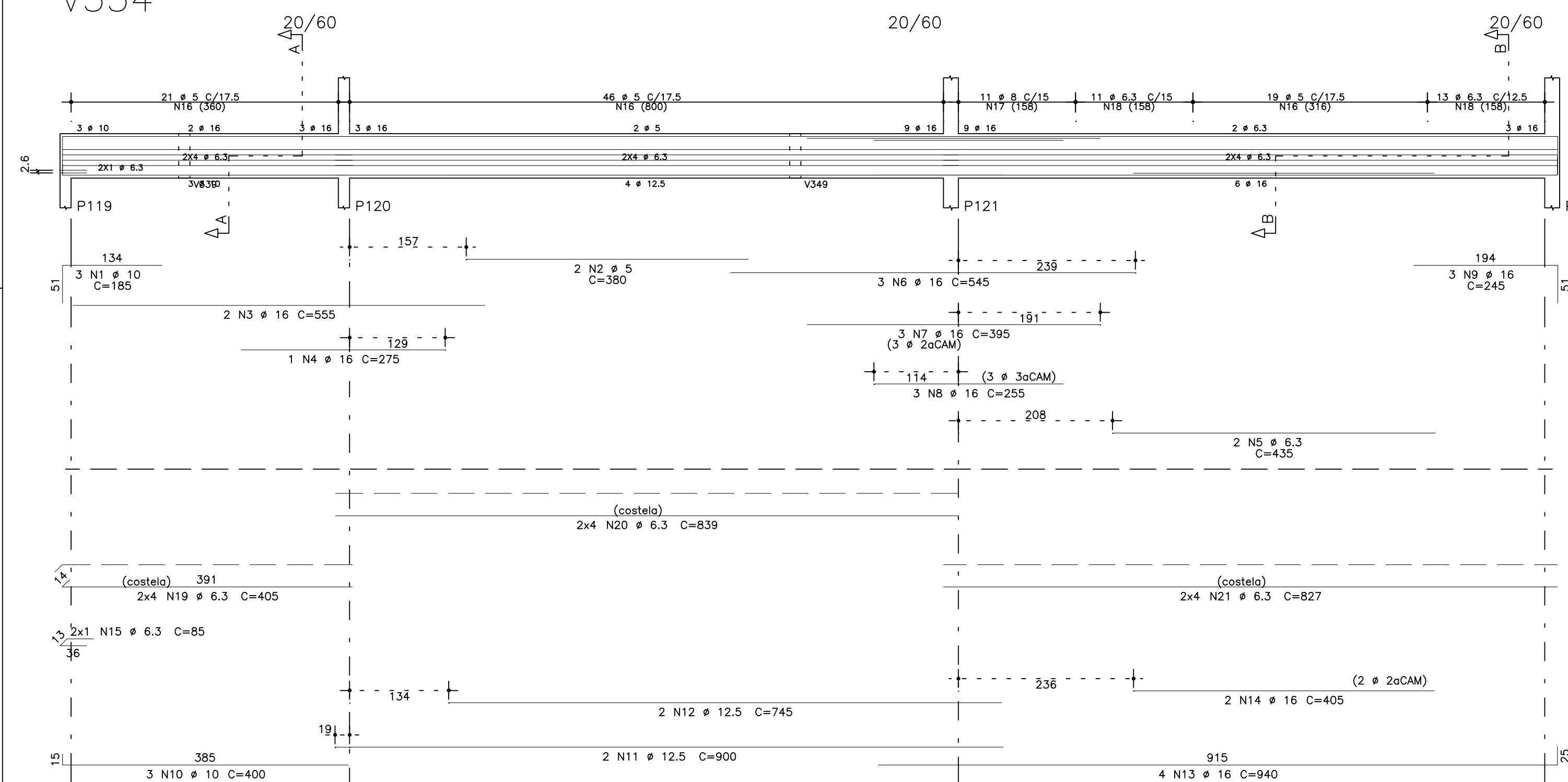
## V335



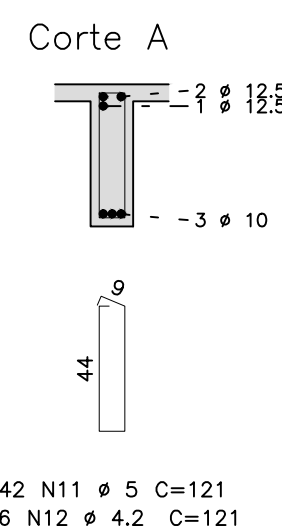
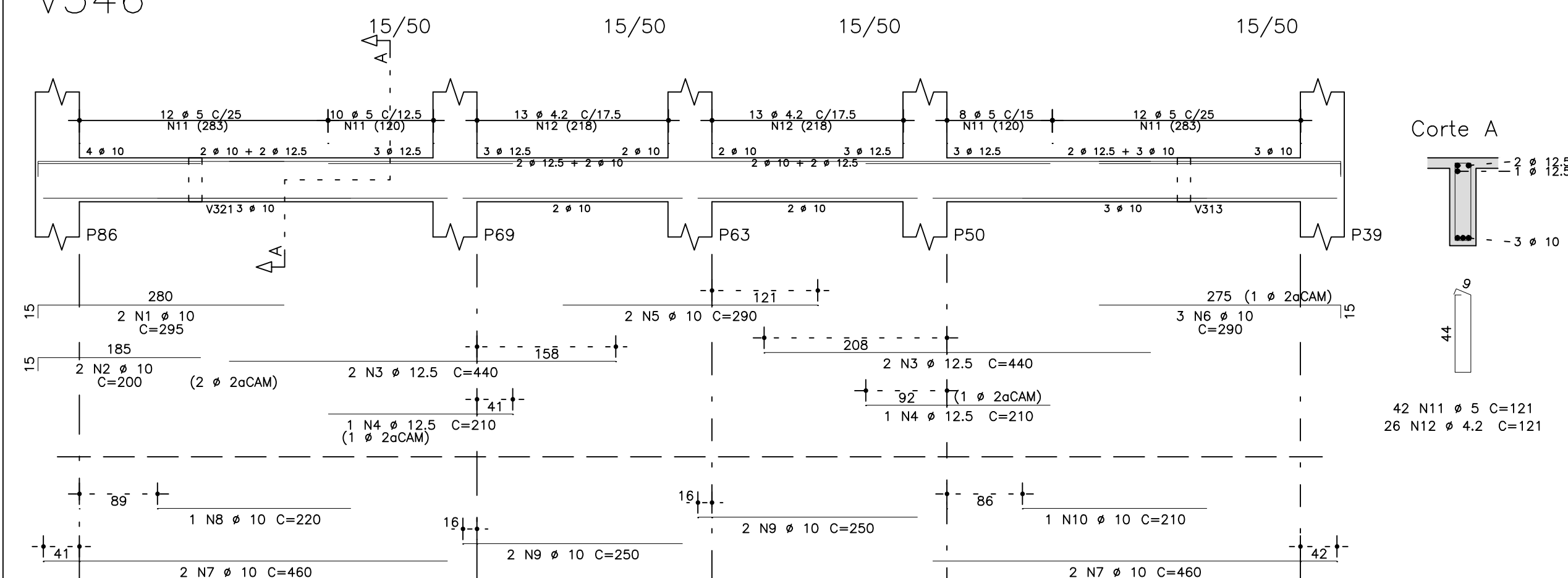
	AÇO	POS	BIT (mm)	QUANT	COMPRIMENTO		
					UNIT (cm)	TOTAL (cm)	
V309	50A	1	10	2	505	1010	
	50A	2	10	2	450	900	
	50A	3	6.3	1	80	80	
	60B	4	4.2	23	121	2783	
V319	50A	1	10	3	165	495	
	50A	2	10	2	270	540	
	50A	3	10	1	178	175	
	50A	4	10	2	284	568	
V334	60B	5	4.2	13	121	1573	
	50A	1	10	3	185	555	
	60B	2	5	2	380	760	
	50A	3	16	2	555	1110	
	50A	4	16	1	275	275	
	50A	5	6.3	2	435	870	
	50A	6	16	3	545	1635	
	50A	7	16	3	395	1185	
	50A	8	16	3	255	765	
	50A	9	16	3	245	735	
	50A	10	10	3	400	1200	
	50A	11	12.5	2	900	1800	
	50A	12	12.5	2	745	1490	
	50A	13	16	4	940	3760	
	50A	14	16	2	405	810	
	50A	15	6.3	2	85	170	
	60B	16	5	86	151	12866	
	50A	17	8	11	154	1694	
	50A	18	6.3	24	152	3648	
	50A	19	6.3	8	405	3240	
	50A	20	6.3	8	839	6712	
	50A	21	6.3	8	827	6616	
	V335	50A	1	6.3	2	430	860
		50A	2	16	3	2140	720
		50A	3	16	3	585	1755
50A		4	16	3	365	1095	
50A		5	16	2	275	550	
50A		6	10	2	430	860	
50A		7	10	2	200	400	
50A		8	10	2	265	795	
60B		9	5	2	355	710	
50A		10	10	2	305	610	
50A		11	10	2	205	410	
50A		12	10	3	175	525	
50A		13	16	5	910	4550	
50A		14	10	10	1025	10275	
50A		15	10	3	510	1530	
50A		16	6.3	2	85	170	
50A		17	6.3	234	152	3344	
60B		18	5	105	151	15855	
50A		19	8	13	154	2002	
50A		20	6.3	8	809	6472	
V338	50A	21	6.3	8	499	3992	
	50A	22	6.3	8	363	2904	
	50A	23	6.3	8	158	1264	
	50A	24	6.3	8	510	4080	
	50A	1	10	2	725	1450	
	50A	2	10	4	290	1160	
V346	60B	3	4.2	28	141	3948	
	50A	4	6.3	12	273	3276	
	50A	1	10	2	295	590	
	50A	2	10	2	200	400	
	50A	3	12.5	4	440	1760	
	50A	4	12.5	2	210	420	
	50A	5	10	2	290	580	
	50A	6	10	3	290	870	
	50A	7	10	4	460	1840	
	50A	8	10	1	220	220	
	50A	9	10	4	250	1000	
	60B	11	5	42	210	210	
	60B	12	4.2	26	121	5082	

RESUMO AÇO CA 50-60			
AÇO	BIT (mm)	COMPR (m)	PESO (kg)
60B	4.2	115	12
60B	5	352	54
50A	6.3	477	117
50A	8	37	15
50A	10	220	136
50A	12.5	55	53
50A	16	189	299
Peso Total	60B =	67	ka
Peso Total	50A =	619	ka

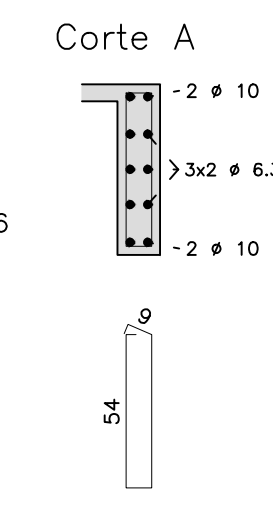
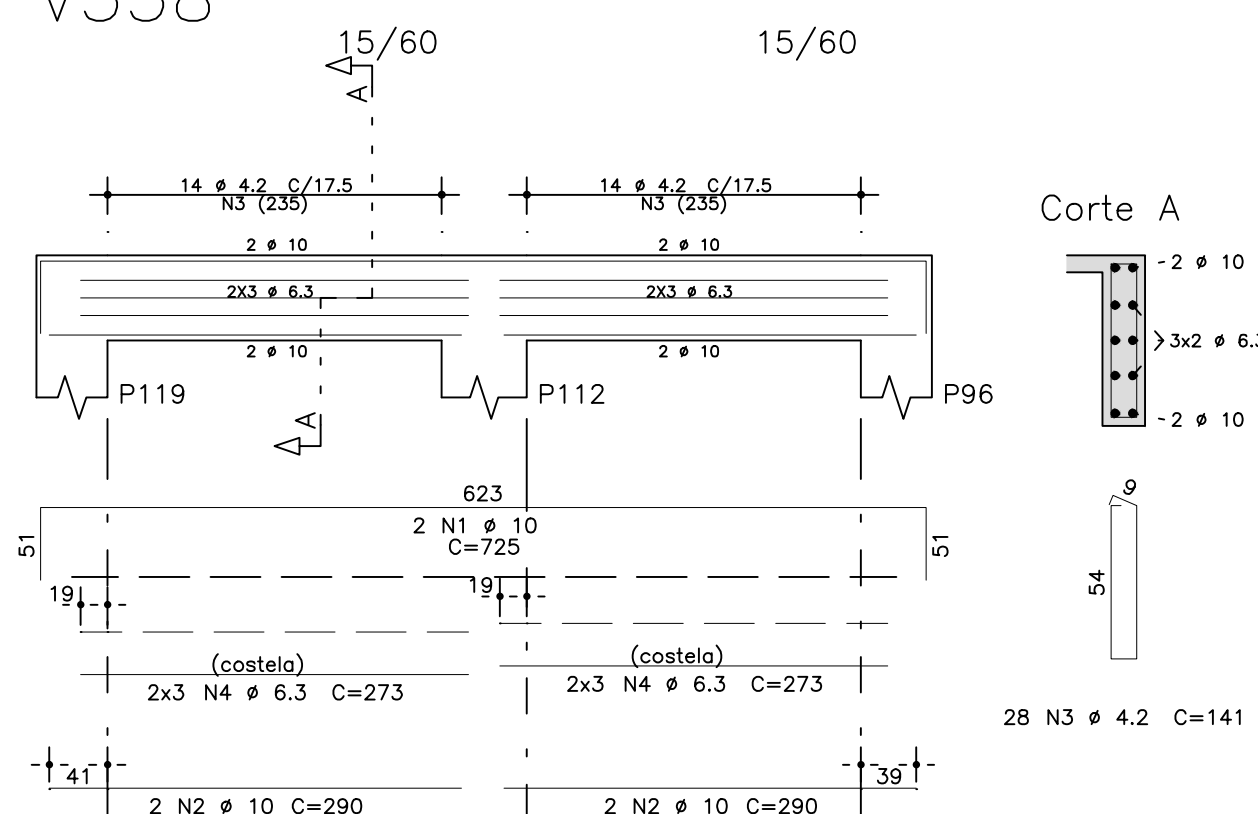
## V334




## V346



## V338



fck 250. kg/cm<sup>2</sup>

<div style="text-align: center;">  <p><b>Schuring &amp; Schuring</b></p> </div>	<div style="text-align: center;"> <b>Schuring &amp; Schuring Ltda.</b>          Escritório Técnico SCSCHURING – Projetos de Engenharia          Av. XV de Novembro, 489 – Porto 2o. Andar – Cuiabá MT          Fone: (065) 321 9959 – Fax: (065) 623 5066 – E-mail – schuring@terra.com.br       </div>		
	<b>PROJETO:</b> PROPRIETARIO: PREFEITURA MUNICIPAL VARZEA GRANDE MT	<b>OBRA:</b> EMEB ALINO FERREIRA MAGALHAES	
	RESP. TEC. EXECUCAO:  	END.: AV. Verdão esq. c/ Rua "B" PARQUE DO LAGO – VARZEA GRANDE	
	<b>AUTORES DO PROJETO:</b>  		
<b>ASSUNTO:</b> DET VIGA PRI PAV		<b>FECHAS DETALHADAS</b> V309 / V319 / V334 / V335 / V338 / V346	
<b>Benedito Eliseu Schuring</b> Eng.Civil – CREA 715/D – MT		<b>FECHAS DETALHADAS</b> V309 / V319 / V334 / V335 / V338 / V346	
<b>Andre Luiz Schuring</b> Eng.Civil – CREA 8697/D – MT		<b>FECHAS DETALHADAS</b> V309 / V319 / V334 / V335 / V338 / V346	